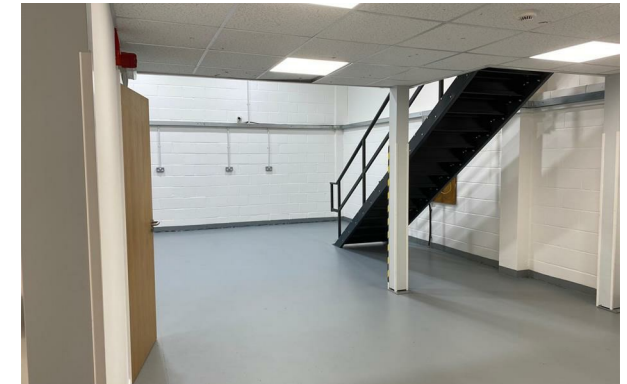


LUXE



6 Moat House Horsecroft Road, Harlow, Essex, CM19 5BN

£1,850

- Recently refurbished spacious Industrial Unit located on a secure gated site
- Fire Alarm System
- Loading bay with full height roller shutter loading door
- Three Phase Electric and Gas Central Heating
- Single storey with Mezzanine and modern facilities
- Fully alarmed premises with security shutters to all Windows and Doors
- Large workshop and storage area with versatile space for storage/office (as required)
- Kitchen area and toilet with disabled access
- 3 to 4 parking spaces
- Energy Efficient and LED lighting in all areas

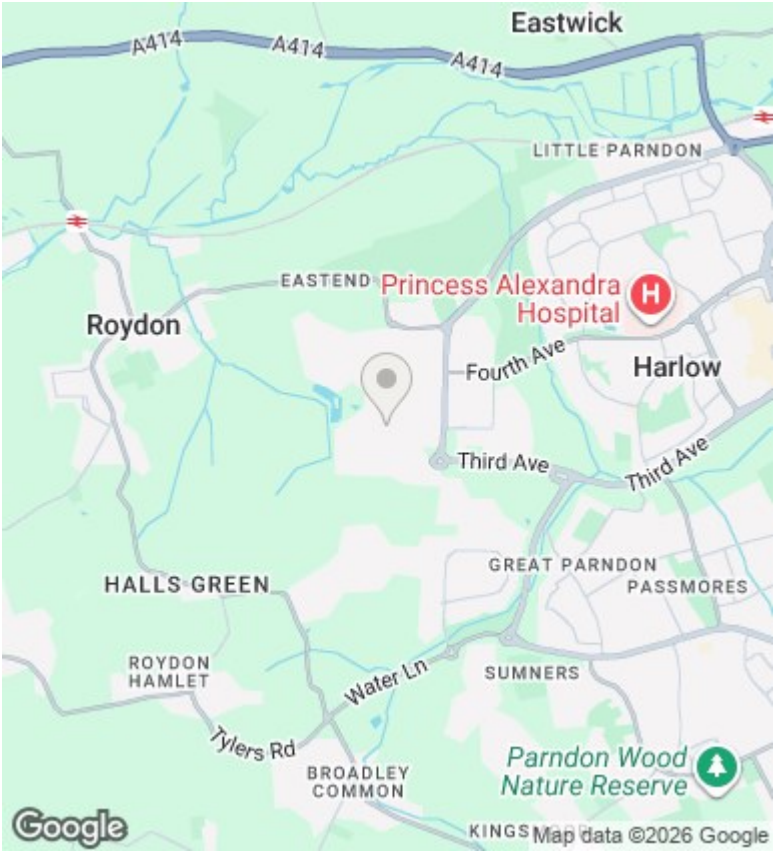
Directions

Viewings

Viewings by arrangement only. Call 0203 551 6141 to make an appointment.

Council Tax Band

EPC Rating:



Energy Efficiency Rating		
	Current	Potential
Very energy efficient - lower running costs		
(92 plus) A		
(81-91) B		
(69-80) C		
(55-68) D		
(39-54) E		
(21-38) F		
(1-20) G		
Not energy efficient - higher running costs		
England & Wales	EU Directive 2002/91/EC	